

FIGHTER 280

6x2 FU280U6



FU280U6

*NOMINAL PAYLOAD	GVM	GCM	POWER	W/BASE	CODE
14T	23,000kg	28,200kg	280ps	6530mm	FN63FU2RFAE

* Subject to weight of body fitted

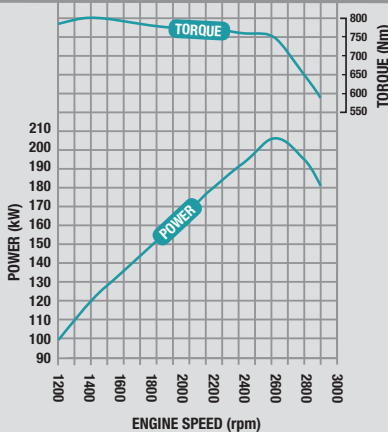
PERFORMANCE (Calculated – Paved Road)

Electronically Speed Limited:	100km/h
Gradeability at Rated GVM:	38.3%
Gradeability at Rated GCM:	30.5%
Turning Circle (kerb to kerb):	23.0m

ENGINE

Model:	6M60-1AT2 Diesel
Configuration:	6 cyl. in-line OHC, 4-valve
Type:	Turbocharged and intercooled with quick heat glow plugs and catalytic converter
Displacement:	7545cc
Bore:	118mm
Stroke:	115mm
Power (JIS Gross):	207kW (281ps) @ 2600rpm
Torque (JIS Gross):	802Nm (592lb/ft) @ 1400rpm
Maximum Engine Speed:	2900rpm
Compression Ratio:	17.8:1
Oil Cooler:	Plate type, water cooled
Complies with Euro 111 exhaust emission standards	

6M60-1AT2 ENGINE MODEL



FUEL

Injection System:	DENSO common rail system
Governor:	Electronic, speed limited to 100km/h
Controls:	Key operated start/fuel Engine idle Emergency stop
Filtration:	Main filter and water separator
Fuel Capacity:	200 litres with lockable fuel cap
Air Cleaner:	Dual element Cyclopac with vertical intake and air restriction indicator

COOLING

Fan:	520mm dia. 6 blades
Fan Drive:	Thermo modulated
Radiator:	Corrugated fin with expansion tank

ELECTRICAL

Voltage:	24V negative earth
Alternator Capacity:	24V-50 amp
Starter Capacity:	24V-5.0kW
Battery Capacity:	2 x 12V, 65Ah/20hr
Headlamp – Type:	Quartz halogen multi parabola
– Capacity:	Low beam 2 x 70W High beam 4 x 70W

CLUTCH

Model:	C7M38
Disc Diameter:	380mm
Type:	Single dry plate
Operation:	Air assisted hydraulic
Facing Area:	Cerametallic – 638.4cm ²

TRANSMISSION

Model:	Eaton FS-8209
No. of Speeds:	9 forward, 1 reverse
Synchromesh:	1L-4H
	Low High
Ratios: Low:	12.64
1st:	8.81
2nd:	6.55
3rd:	4.77
4th:	3.55
Reverse:	13.21
PTO Opening:	LH side

PROPELLER SHAFT

Type:	P13
Universal Joint:	Needle roller

FRONT AXLE

Model:	F070T
Type:	Reverse Elliot 'I' beam
Design Capacity:	6300kg
Maximum Operating Capacity:	6300kg

REAR AXLES

Front Rear Axle:	R10T, D10H
Type:	Full floating hypoid drive
Design Capacity:	10,800kg
Maximum Operating Capacity:	10,800kg
Ratio:	4.222:1
Lazy Axle:	
Type:	FUSO R10D
Design Capacity:	8500kg
Maximum Operating Capacity:	8500kg
Maximum Combined Operating Capacity:	17,200kg

STEERING

Type:	Integral power assisted – ball & nut
Ratio:	22.4:1
Steering Wheel:	450mm energy absorbing urethane
Steering Column:	Tilt/telescopic adjustable with lock

BRAKES

Type:	Full air, dual circuit, Mitsubishi taper roller with automatic brake adjustment
Size:	Front: 410 x 150mm Rear: 410 x 200mm Lazy Axle: 410 x 200mm
Lining:	Asbestos free: area/swept – 9144/14174cm ²
Park Brake:	Rear wheel spring actuated
Auxiliary:	Exhaust brake
Compressor:	Water cooled, 340cc single cylinder
Air Dryer Model:	DU-5

FRONT SUSPENSION

Type Front:	Parabolic leaf
Size:	1400 x 80 x 19mm – 4 leaves
Capacity at Ground:	3400kg each
Shock Absorbers:	Double acting

REAR SUSPENSION

Type:	Trailing arm with air dump control
Air Spring:	2 x 250mm diameter
Trailing Arm:	(615 + 380) x 80 x 35mm – 2 leaves
Capacity at Ground:	18,000kg total
Shock Absorbers:	Double acting

CHASSIS

Type:	Reinforced parallel channel
Size:	280 x 90 x 8.0mm
Width:	840mm
Tensile Strength:	540Mpa
<i>Refer to FUSO bodybuilder guidelines on web site www.mmnztruckdwg.co.nz before mounting a body or modifying the chassis.</i>	



WHEELS & TYRES

Wheel:	Type:	11, Single piece disc
	Size:	22.5 x 8.25DC-165-12t
	Stud pattern:	10 x 335mm PCD
Tyre:	Size:	275/70R22.5 148/145K
Spare Tyre Carrier:		Provided

KERB WEIGHT (kg – estimated)

Front:	Rear:	Total:
2846kg	3339kg	6185kg

Includes coolant, oils, spare wheels, tools and 20 litres fuel.

CAB FEATURES

Construction:	All steel forward control	
Type:	Manual tilt 44 degrees	
Mounting:	Hydroelastic suspension 4 point	
Colour:	Natural White	
Interior:	Fully trimmed with vinyl floor mat	
Windscreen:	Laminated tinted Tinted side and rear glass	
Windscreen Wipers:	2 speed – intermittent cycle	
Transom Window on LH Door		
Rear Vision Mirrors:	West coast with extended arms	
Lift-up Front Maintenance Panel		
Front Bumper Air Dam		
White Roof Outline Marker Lamps:	2	
Roof Mounting Points (max. static load 50kg)		
Seating Capacity:	3	
Seat Belts:	2 ELR lap sash, 1 lap	
Seats:	Driver:	Air suspension with auto levelling height control, 32 stage reclining, 11 stage sliding, front and rear height adjuster, lumbar support, integral headrest and fabric trim
	Centre:	Low back with fabric trim, forward folding
	LH:	Fixed base, 32 stage reclining, integral headrest and fabric trim

DIMENSIONS

<i>Width</i>	
Front Fender:	2370mm
Rear Axle:	2465mm
Front Track:	1915mm
Rear Track:	1845mm
Frame:	840mm
<i>Length</i>	
Overall:	11,030mm
Extreme Axle Spacing:	7190mm
Front Overhang:	1245mm
Wheelbase:	6530mm
Rear Axle Spacing:	1320mm
Front Axle to Rear of Cab:	745mm
Cab to End of Frame:	9040mm
Frame, Rear Axle to End:	3255mm
<i>Height</i>	
Overall:	2630mm
Cab to Frame:	1669mm
Rear Frame to Ground:	Inflated: 972mm Deflated: 913mm
Ground Clearance:	205mm

- Park brake
- Glow plug indicator
- Alternator
- Oil filter blockage
- Engine control (ECU)
- Air filter restriction
- Door
- Cab tilt

Warning Lamps/Buzzers:

- Air pressure
- Oil pressure
- Engine overheat/low coolant level
- Air rear suspension

STANDARD EQUIPMENT

- Electric windows and central locking
- Air conditioner/heater demister
- AM/FM ETR radio with cassette and CD player
- Centre seat storage console
- LH seat storage tray
- Overhead storage pocket with lid
- RH door storage pocket
- Rear bunker storage pockets
- Cup holders x 2
- Opening rear quarter windows
- Interior sun visors
- Fluorescent cabin lamp
- Interior and map reading lamps
- Windscreen washers
- Hazard warning lamps
- Cigarette lighter/accessories plug
- Electric horn
- Reverse warning buzzer
- Toolkit
- Chassis mounted toolkit

INSTRUMENTS

Gauges:

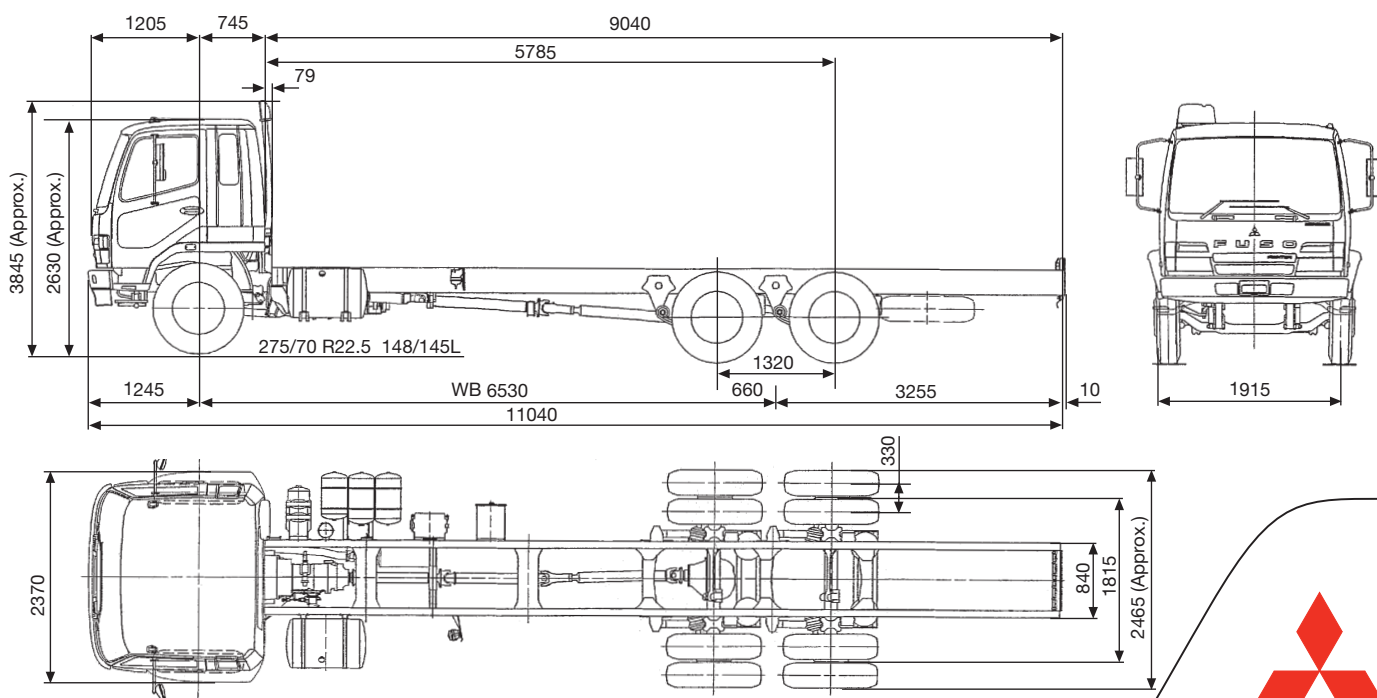
- Speedometer with odometer & dual trip meter
- Tachometer
- Air pressure (2)
- Fuel level
- Water temperature
- Digital clock

Warning Lamps:

- Turn signal
- High beam
- Exhaust brake

FIGHTER 280

6x2 FU280U6



A policy of continual improvement means that specifications detailed in this brochure are subject to change without notice. Your Mitsubishi FUSO Dealer will be able to confirm the exact current specifications.

