

FIGHTER 280

6x2 FU281U8



FU281U8

*NOMINAL PAYLOAD	GVM	GCM	POWER	W/BASE	CODE
14T	23,200kg	34,000kg	280ps	6,530mm	FN63FU2RFAA

* Subject to weight of body fitted

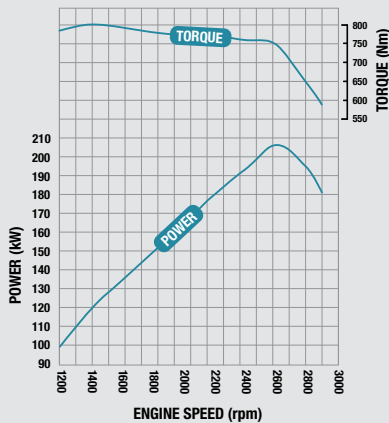
PERFORMANCE

Electronically Speed Limited:	100km/h
Gradeability at Rated GVM:	34.5%
Gradeability at Rated GCM:	22.5%
Turning Circle (kerb to kerb):	24.0m

ENGINE

Model:	6M60-3AT2 Diesel
Configuration:	6 cyl. in-line OHC, 4-valve
Type:	Turbocharged and intercooled with quick heat glow plugs and cooled EGR
Displacement:	7,545cc
Bore:	118mm
Stroke:	115mm
Power (JIS Gross):	207kW (281ps) @ 2,600rpm
Torque (JIS Gross):	802Nm (592lb/ft) @ 1,400rpm
Maximum Engine Speed:	2,900rpm
Compression Ratio:	18:0:1
Oil Cooler:	Plate type, water cooled
Complies with EPA04 exhaust emission standards	

6M60-3AT2 ENGINE MODEL



FUEL

Injection System:	DENSO common rail system
Governor:	Electronic, speed limited to 100km/h
Controls:	Key operated start/fuel
	Engine idle
	Emergency stop
Filtration:	Main filter and water separator
Fuel Capacity:	300L Alloy with lockable fuel cap
Air Cleaner:	Dual element Cyclopac with vertical intake and air restriction indicator
Muffler:	Catalytic convertor with oxidation catalyst

COOLING

Fan:	540mm dia. 10 blades
Fan Drive:	Thermo modulated
Radiator:	Corrugated fin with expansion tank

ELECTRICAL

Voltage:	24V negative earth
Alternator Capacity:	24V-50 amp
Starter Capacity:	24V-5.0kW
Battery Capacity:	Heavy duty 2 x 12V, 100Ah/20hr
Headlamp – Type:	Halogen
– Capacity:	Low beam 2 x 70W
	High beam 2 x 75W

CLUTCH

Model:	C7M38
Disc Diameter:	380mm
Type:	Single dry plate
Operation:	Air assisted hydraulic
Facing Area:	Cerametallic – 754cm ²

TRANSMISSION

Model:	Eaton FS-8209
No. of Speeds:	9 forward, 1 reverse
Synchromesh:	1L~4H
	Low High
Ratios: - Low:	12.64
- 1st:	8.81 2.48
- 2nd:	6.55 1.85
- 3rd:	4.77 1.34
- 4th:	3.55 1.00
- Reverse:	13.21
PTO Opening:	LH side

PROPELLER SHAFT

Type:	P140
Universal Joint:	Needle roller

FRONT AXLE

Model:	F070T
Type:	Reverse Elliot 'I' beam
Design Capacity:	6,300kg
Maximum Operating Capacity:	6,300kg

REAR AXLE

Front Rear Axle:	R10T, D10H
Type:	Full floating hypoid drive
Design Capacity:	10,800kg
Maximum Operating Capacity:	10,800kg
Ratio:	4.222:1
Lazy Axle:	
Type:	FUSO R10D
Design Capacity:	8,500kg
Maximum Operating Capacity:	8,500kg
Maximum Combined Operating Capacity:	18,000kg

STEERING

Type:	Integral power assisted – ball & nut
Ratio:	22.4:1
Steering Wheel:	450mm energy absorbing urethane
Steering Column:	Tilt/telescopic adjustable with lock

BRAKES

Type:	Full air, dual circuit, Mitsubishi taper roller with automatic brake adjustment & ABS
Size:	Front: 410 x 150mm
	Rear: 410 x 200mm
	Lazy Axle: 410 x 200mm
Lining:	Asbestos free: area/swept – 9,144/14,174cm ²
Park Brake:	Rear wheel spring actuated
Auxiliary:	Exhaust brake
Compressor:	Water cooled, 319cc single cylinder high output
Air Dryer Model:	DU-3

FRONT SUSPENSION

Type:	Long taper leaf
Size:	1,400 x 80 x 18mm – 1 leaf
	x 22mm – 2 leaves
Capacity at Ground:	3,665kg each
Shock Absorbers:	Double acting

REAR SUSPENSION

Type:	Trailing arm with air dump control
Air Spring:	2 x 250mm diameter
Trailing Arm:	(643 + 390) x 80 x 35mm – 2 leaves
Capacity at Ground:	18,000kg total
Shock Absorbers:	Double acting

CHASSIS

Type:	Reinforced parallel channel
Size:	280 x 90 x 8.0mm
Width:	841mm
Tensile Strength:	540Mpa

Refer to FUSO bodybuilder guidelines on web site www.mmnztruckdwg.co.nz before mounting a body or modifying the chassis.



WHEELS & TYRES

Wheel:	Type:	11, Single piece disc
	Size:	22.5 x 8.25DC-165-12t
	Stud pattern:	10 x 335mm PCD
Tyre:	Size:	275/70R22.5 148/145K
Spare Tyre Carrier:		Provided

KERB WEIGHT (kg – estimated)

Front:	Rear:	Total:
3,010kg	3,240kg	6,251kg

Includes coolant, oils, spare wheels, tools and 20 litres fuel.

CAB FEATURES

Construction:	All steel forward control	
Type:	Manual tilt 44 degrees	
Mounting:	Hydroelastic suspension 4 point	
Colour:	Natural White	
Interior:	Fully trimmed with vinyl floor mat	
Windscreen:	Laminated tinted	
	Tinted side and rear glass	
Windscreen Wipers:	2 speed – intermittent cycle	
Transom Window on LH Door		
Rear Vision Mirrors:	Heated with extended arms	
Lift-up Front Maintenance Panel		
Cab & engine side covers for noise reduction		
Front Bumper Air Dam		
White Roof Outline Marker Lamps:	2	
Roof Mounting Points (max. static load 50kg)		
Seating Capacity:	3	
Seat Belts:	2 ELR lap sash, 1 lap	
Seats: Driver:	Air suspension with auto levelling height control, 32 stage reclining, 11 stage sliding, front and rear height adjuster, lumbar support, integral headrest and fabric trim	
Centre:	Low back with fabric trim, forward folding	
LH:	Fixed base, 32 stage reclining, integral headrest and fabric trim	

INSTRUMENTS

Gauges:

- Speedometer with odometer & dual trip meter
- Tachometer
- Air pressure (2)
- Fuel level
- Water temperature
- Digital clock

Warning Lamps:

- Turn signal
- High beam
- Exhaust brake
- Park brake
- Glow plug indicator
- Alternator
- Oil filter blockage
- Engine control/Cruise control (ECU)
- Air filter restriction
- Door
- Cab tilt

Warning Lamps/Buzzers:

- Air pressure
- Oil pressure
- Engine overheat/low coolant level
- Air rear suspension

STANDARD EQUIPMENT

- Electric windows
- Keyless central locking
- Cruise control
- Air conditioner/heater demister
- AM/FM ETR radio and CD player
- Centre seat storage console
- LH seat storage tray
- Overhead storage pocket with lid
- RH door storage pocket
- Rear bunker storage pockets
- Cup holders x 2
- Opening rear quarter windows
- Interior sun visors
- Fluorescent cabin lamp
- Interior and map reading lamps
- Windscreen washers
- Hazard warning lamps
- Cigarette lighter/accessories plug
- Electric horn
- Reverse warning buzzer
- Toolkit
- Chassis mounted toolbox

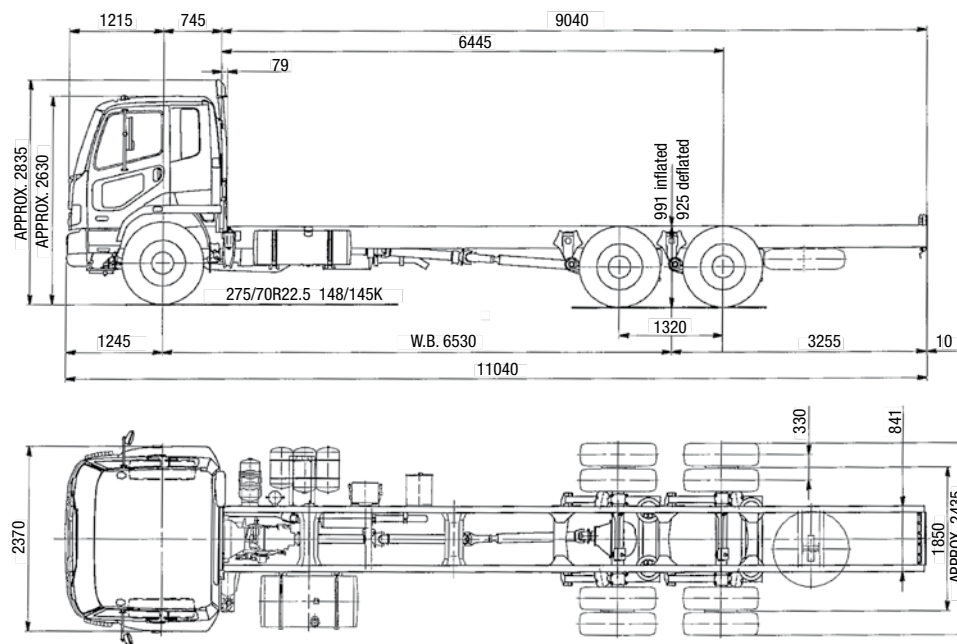
WARRANTY

Vehicle: 36 Months/200,000 km*

**Which ever comes first subject to the terms and conditions detailed in the warranty book.*

FIGHTER 280

6x2 FU281UB



A policy of continual improvement means that specifications detailed on this specification sheet are subject to change without notice. Refer to FUSO Body Builder drawings on www.mmnztruckdwg.co.nz for accurate dimensions, or contact your Mitsubishi FUSO Dealer who will be able to confirm exact current specifications.



FUSO

WWW.FUSO.CO.NZ