

# FIGHTER 250

## 4x2 FK250L8



FK250L8

*NOMINAL PAYLOAD	GVM	GCM	POWER	W/BASE	CODE
7.0T	13,500kg	20,000kg	250ps	5,210mm	FK62FLZ1RFAA

\* Subject to weight of body fitted

### PERFORMANCE

Electronically Speed Limited:	122km/h
Gradeability at Rated GVM:	37.0%
Gradeability at Rated GCM:	23.4%
Turning Circle (kerb to kerb):	18.2m

### ENGINE

**Model: 6M60-3AT1 Diesel (ADR 80/02)**

Configuration: 6 cyl. in-line OHC, 4-valve

Type: Turbocharged and intercooled with quick heat glow plugs and cooled EGR

Displacement: 7,545cc

Bore: 118mm

Stroke: 115mm

Power (JIS Gross): 184kW (250ps) @ 2,600rpm

Torque (JIS Gross): 701Nm (517lb/ft) @ 1,400rpm

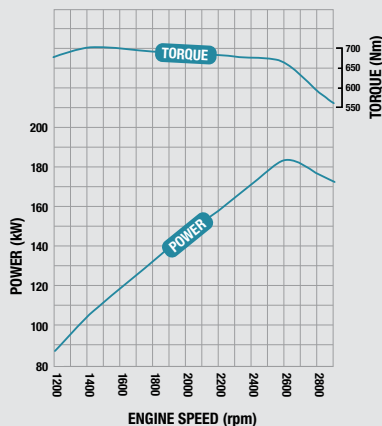
Maximum Engine Speed: 2,900rpm

Compression Ratio: 18:1:1

Oil Cooler: Plate type, water cooled

**Meets EPA04 exhaust emission standards**

### 6M60-3AT1 ENGINE MODEL



### FUEL

Injection System: DENSO common rail system

Governor: Electronic

Controls: Key operated start/fuel  
Engine idle  
Emergency stop

Filtration: Main filter and water separator

Fuel Capacity: 200 litres with lockable fuel cap

Air Cleaner: Dual element Cyclopac with vertical intake and air restriction indicator

Muffler: Catalytic convertor with oxidation catalyst

### COOLING

Fan: 540mm dia. 10 blades

Fan Drive: Thermo modulated

Radiator: Corrugated fin with expansion tank

### ELECTRICAL

Voltage: 24V negative earth

Alternator Capacity: 24V-50 amp

Starter Capacity: 24V-5.0kW

Battery Capacity: Heavy duty 2 x 12V, 100Ah/20hr

Headlamp – Type: Halogen

– Capacity: Low beam 2 x 70W  
High beam 2 x 75W

### CLUTCH

**Model: C7M38**

Disc Diameter: 380mm

Type: Single dry plate

Operation: Air assisted hydraulic

Facing Area: Cerametallic – 754cm<sup>2</sup>

### TRANSMISSION

**Model: M070S6-0D**

No. of Speeds: 6 with air assisted gearshift

Synchromesh: 2nd-6th

1: 6.807

2: 4.172

3: 2.396

4: 1.504

5: 1.000

6: 0.774

Reverse: 6.807

PTO Opening: LH side

### PROPELLER SHAFT

Type: P10

Universal Joint: Needle roller

### FRONT AXLE

**Model: F500T**

Type: Reverse Elliot 'I' beam

Design Capacity: 5,000kg

Maximum Operating Capacity: 5,000kg

### REAR AXLE

**Model: R052T**

Type: Full floating hypoid

Design Capacity: 9,500kg

Maximum Operating Capacity: 9,200kg

Ratio: 4.875:1

### STEERING

Type: Integral power assisted – ball & nut

Ratio: 17.1-20.0:1

Steering Wheel: 450mm energy absorbing urethane

Steering Column: Tilt/telescopic adjustable with lock

### BRAKES

Type: Full air, dual circuit, Mitsubishi taper roller with automatic brake adjustment & ABS

Size: Front: 370 x 150mm  
Rear: 370 x 170mm

Lining: Asbestos free: area/swept – 4,708/7,439cm<sup>2</sup>

Park Brake: Rear wheel spring actuated

Auxiliary: Exhaust brake

Compressor: Water cooled, 319cc single cylinder high output

Air Dryer Model: DU3

### FRONT SUSPENSION

Type: Long taper leaf with stabilizer bar

Size: 1,300 x 70 x 16mm – 2 leaves  
x 18mm – 2 leaves

Capacity at Ground: 2,700kg each

Shock Absorbers: Double acting

### REAR SUSPENSION

Type: Semi-elliptic leaf with stabilizer bar

Size: 1,300 x 70 x 12mm – 10 leaves

Auxiliary: 900 x 70 x 11mm – 8 leaves

Capacity at Ground: 4,865kg each

### CHASSIS

Type: Parallel channel with reinforcement

Size: 230 x 80 x 8.0mm

Width: 844mm

Tensile Strength: 540Mpa

Refer to FUSO bodybuilder guidelines on web site [www.fuso.co.nz/fighterbodies](http://www.fuso.co.nz/fighterbodies) before mounting a body or modifying the chassis.



**WHEELS & TYRES**

Wheel:	Type:	7, Single piece disc
	Size:	19.5 x 6.75-147-12t
	Stud pattern:	8 x 285mm PCD
Tyre:	Size:	265/70R19.5 140/138M
Spare Tyre Carrier:		Provided

**KERB WEIGHT** (kg – estimated)

Front:	Rear:	Total:
2,390kg	1,545kg	3,935kg

Includes coolant, oils, spare wheels, tools and 20 litres fuel.

**CAB FEATURES**

Construction:	All steel forward control
Type:	Manual tilt 44 degrees
Mounting:	Hydroelastic suspension 4 point
Colour:	Natural White
Interior:	Fully trimmed with vinyl floor mat
Windscreen:	Laminated tinted Tinted side and rear glass
Windscreen Wipers:	2 speed – intermittent cycle
Transom Window on LH Door	
Rear Vision Mirrors:	Heated with extended arms
Lift-up Front Maintenance Panel	
Cab & engine side covers for noise reduction	
Front Bumper Air Dam	
White Roof Outline Marker Lamps:	2
Roof Mounting Points (max. static load 50kg)	
Seating Capacity:	3
Seat Belts:	2 ELR lap sash, 1 lap
Seats: Driver:	Air suspension with auto levelling height control, 32 stage reclining, 11 stage sliding, front and rear height adjuster, lumbar support, integral headrest and fabric trim
Centre:	Low back with fabric trim, forward folding
LH:	Fixed base, 32 stage reclining, integral headrest and fabric trim

**INSTRUMENTS****Gauges:**

- Speedometer with odometer & dual trip meter
- Tachometer
- Air pressure (2)
- Fuel level
- Water temperature
- Digital clock

**Warning Lamps:**

- Turn signal
- High beam
- Exhaust brake
- Park brake
- Glow plug indicator
- Alternator
- Oil filter blockage
- Engine control/Cruise control (ECU)
- Air filter restriction
- Door
- Cab tilt

**Warning Lamps/Buzzers:**

- Air pressure
- Oil pressure
- Engine overheat/low coolant level

**STANDARD EQUIPMENT**

- Electric windows
- Keyless central locking
- Cruise control
- Air conditioner/heater demister
- AM/FM ETR radio and CD player
- Centre seat storage console
- LH seat storage tray
- Overhead storage pocket with lid
- RH door storage pocket
- Rear bunker storage pockets
- Cup holders x 2
- Opening rear quarter windows
- Fluorescent cabin lamp
- Interior and map reading lamps
- Windscreen washers
- Hazard warning lamps
- Oil level check switch
- Cigarette lighter/accessories plug
- Electric horn
- Reverse warning buzzer
- Toolkit
- Chassis mounted toolbox

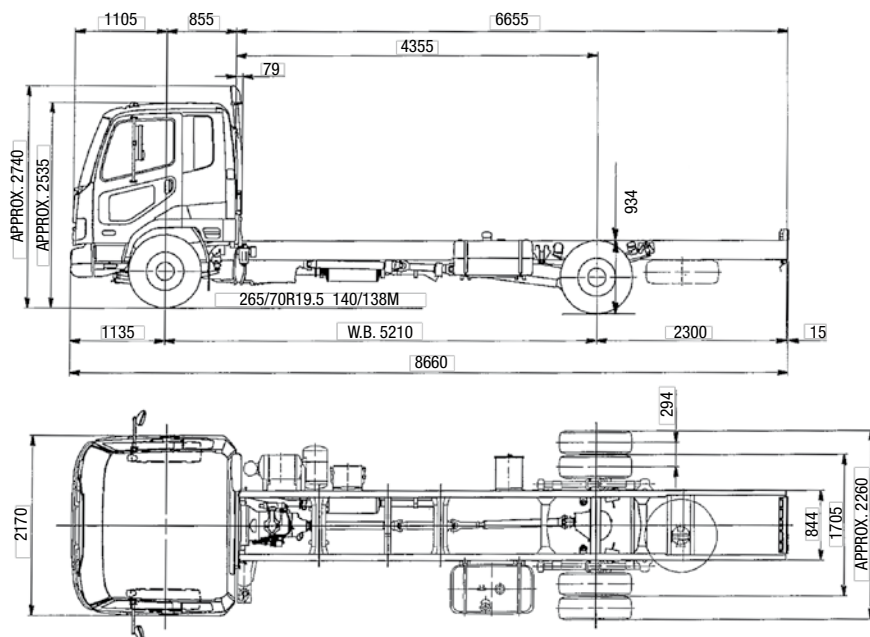
**WARRANTY**

Vehicle: 36 Months/200,000 km\*

\*Which ever comes first subject to the terms and conditions detailed in the warranty book.

# FIGHTER 250

## 4x2 FK250L8



A policy of continual improvement means that specifications detailed on this specification sheet are subject to change without notice. Refer to FUSO Body Builder drawings on [www.fuso.co.nz/fighterbodies](http://www.fuso.co.nz/fighterbodies) for accurate dimensions, or contact your Mitsubishi FUSO Dealer who will be able to confirm exact current specifications.



**FUSO**

[WWW.FUSO.CO.NZ](http://WWW.FUSO.CO.NZ)